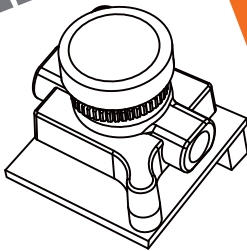




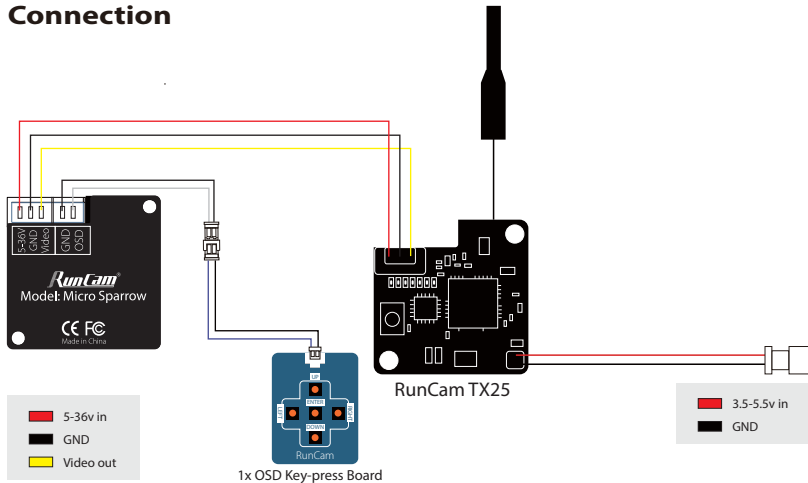
RUNCAM

# Micro Sparrow

USER MANUAL

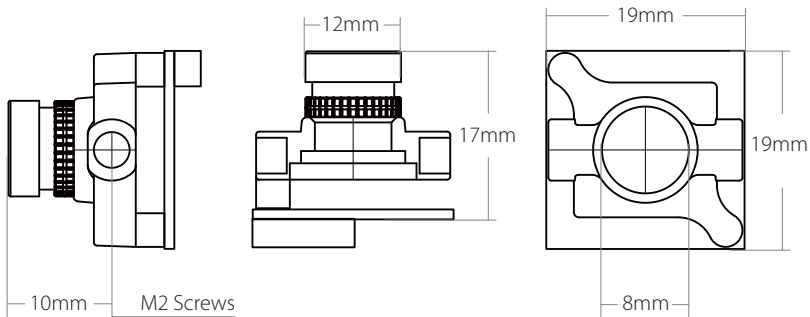


# Connection



## Dimensions & Installation

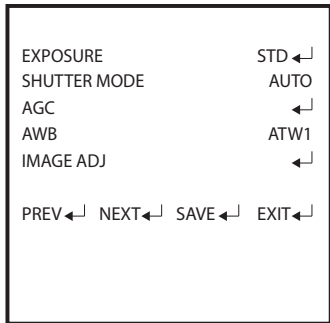
---



# Camera Menu

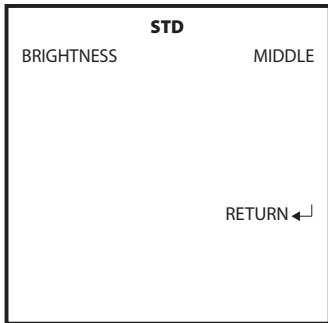
---

- EXPOSURE



- EXPOSURE ( **STD** / BLC )
- SHUTTER MODE  
**AUTO** / MANUAL 1/25-100000
- AWB ( **ATW1** / USER / PUSH)

- STD



- BRIGHTNESS ( LOW / **MIDDLE** / HIGH)

# Camera Menu

---

- AGC

AGC	
MODE	ON
INTENSITY	MIDDLE
	RETURN ←↵

- MODE ( **ON** / OFF )
- INTENSITY ( LOW / **MIDDLE** / HIGH )

- IMAGE ADJ

IMAGE ADJ	
SHARPNESS	60/100
HDNR	65/100
CONTRAST	65/100
SATURATION	60/100
R GAIN	45/100
NEXT ←↵	RETURN ←↵

- SHARPNESS ( **60** / 0-100 )
- HDNR ( **65** / 0-100 )
- CONTRAST ( **65** / 0-100 )
- SATURATION ( **60** / 0-100 )
- R GAIN ( **45** / 0-100 )

# Camera Menu

---

- IMAGE ADJ

IMAGE ADJ	
G GAIN	45/100
B GAIN	45/100
NEXT ←↵	RETURN ←↵

- G GAIN ( **45** / 0-100 )
- B GAIN ( **45** / 0-100 )

- SYSTEM

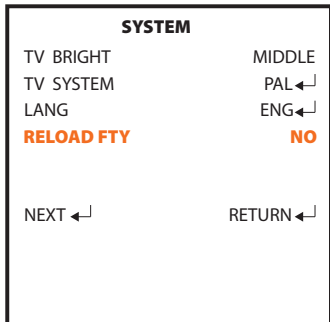
SYSTEM	←↵
WDR	MIDDLE
MIRROR	←↵
PREV ←↵	NEXT ←↵
SAVE ←↵	EXIT ←↵

## MIRROR

- FLIP H (**OFF** / ON)
- FLIP V (**OFF** / ON)

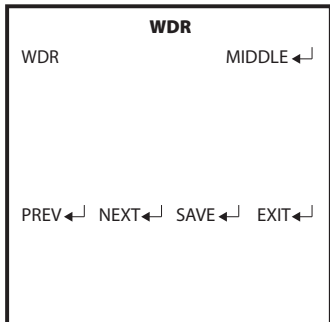
# Camera Menu

- SYSTEM



- TV BRIGHT ( LOW / **MIDDLE** / HIGH )
- TV SYSTEM ( PAL / NTSC )
- LANG ( **ENG** / 简 / 日本語 )
- **RELOAD FTY ( NO / YES )**

- WDR



- WDR ( LOW / **MIDDLE** / HIGH )

## Parameters

Model	RunCam Sparrow Micro
Image Sensor	1/3" CMOS Sensor
Horizontal Resolution	700TVL
Lens	2.1mm (M8) FOV145° / 16:9
Signal System	NTSC/PAL Switchable on OSD menu
S/N Ratio	>50dB (AGC OFF)
Electronic Shutter Speed	PAL: 1/25~100,000; NTSC: 1/30~100,000
Auto Gain Control (AGC)	LOW/MIDDLE/HIGH
Min. Illumination	0.01Lux@1.2F
WDR	LOW/MIDDLE/HIGH
DNR	2DNR
Day/Night	AUTO
Power	DC 5-36V
Working Current	12V@70mA / 5V@170mA
Net Weight	4.6g
Dimensions	19mm*19mm*17mm