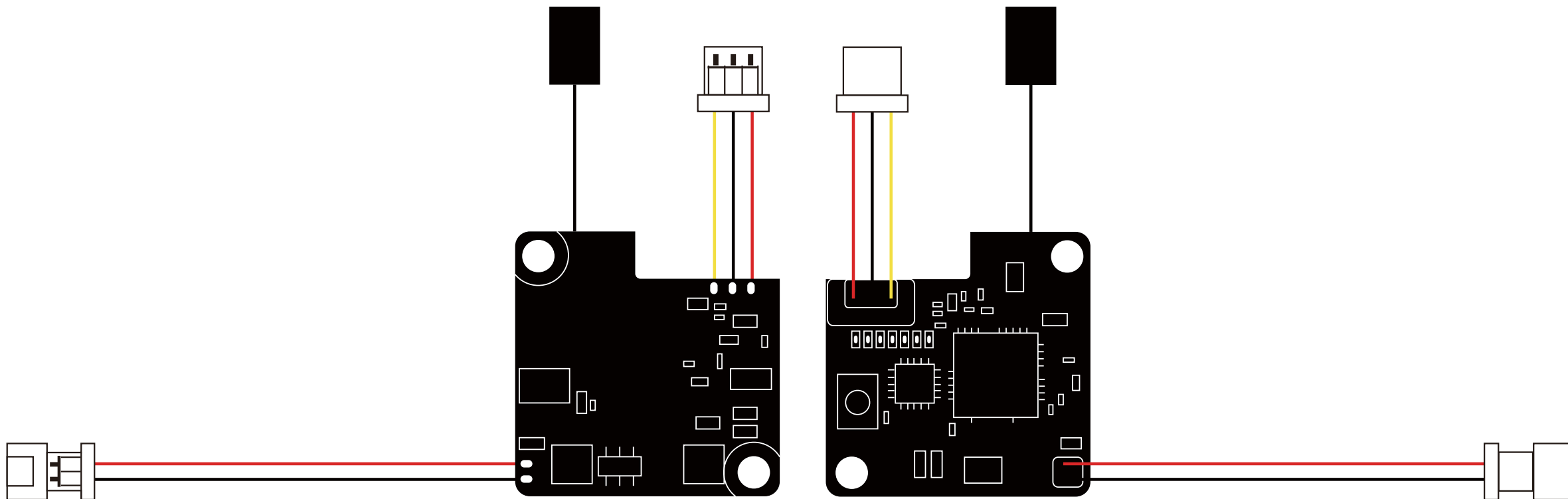


# RunCam TX25

1S 3.5-5.5V 5.8G 48CH 25mW Video Transmitter



## Frequency Setup

### Lock mode:

Red LED flashes, only limited frequency available;

### Unlocked mode:

Red LED keeps on, all 48 channels available;

By long pressing button for 10 seconds, you can switch between the two modes.

### Note:

Before you get TX25 unlocked, it is highly recommended to know about the rules and regulations in your country about the frequency to avoid a fine or confiscation of your device.

### 1 Blue LED for Channel

Short press the button to switch the Channel, Channel 1/2/3/4/5/6/7/8 in sequence.

For each short press, the Blue LED flashes once, and only when it's under the Channel 1, the LED is always on.

### 6 Red LED for Band

Long press the button two seconds to switch the Band, Band 1/2/3/4/5/6 in sequence. For each long press, the six Red LEDs light in turn.

## Parameter

**Frequency Channel:** 5.8G 48CH

**Output Power:** 13dBm / 25mW

**Working Current:** 5V@ 150mA

**Voltage out:** 4.5V@max 250mA

**Voltage in:** 1S 3.5-5.5V

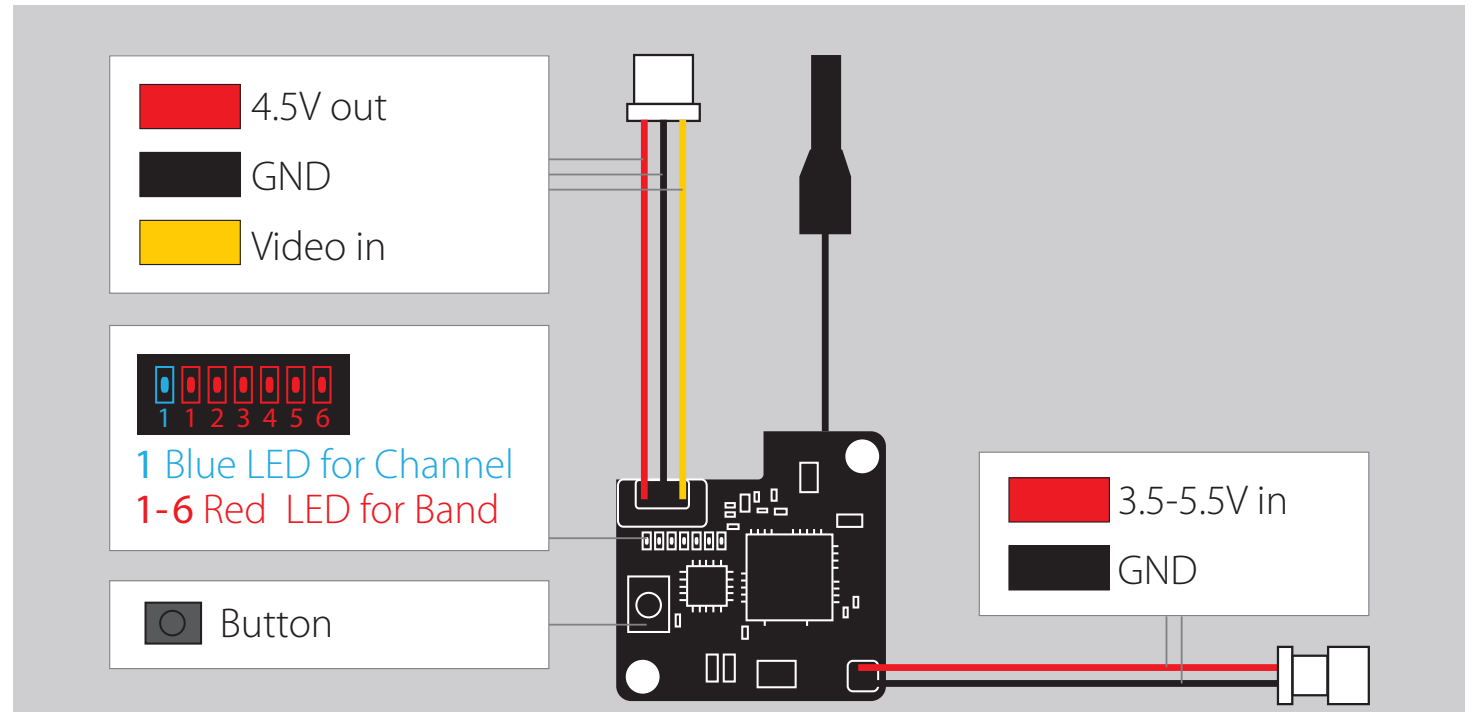
**Video Input Impedance:** 75 Ohm

**Antenna :** 5.8G 2dB Omni antenna

**Weight:** 2.5g (with antenna)

**PCB Size:** 19mm\*19mm

## Instruction diagram



# Frequency Table

 Lock

Channel	CH1	CH2	CH3	CH4	CH5	CH6	CH7	CH8
1 Band A	5865	5845	5825	5805	5785	5765	5745	5725
2 Band B	5733	5752	5771	5790	5809	5828	5847	5866
3 Band E	5705	5685	5665	5645	5885	5905	5925	5945
4 Airwave	5740	5760	5780	5800	5820	5840	5860	5880
5 Race Band	5658	5695	5732	5769	5806	5843	5880	5917
6 Low Race	5362	5399	5436	5473	5510	5547	5584	5621

[www.runcam.com](http://www.runcam.com)