

RunCam Racer HD

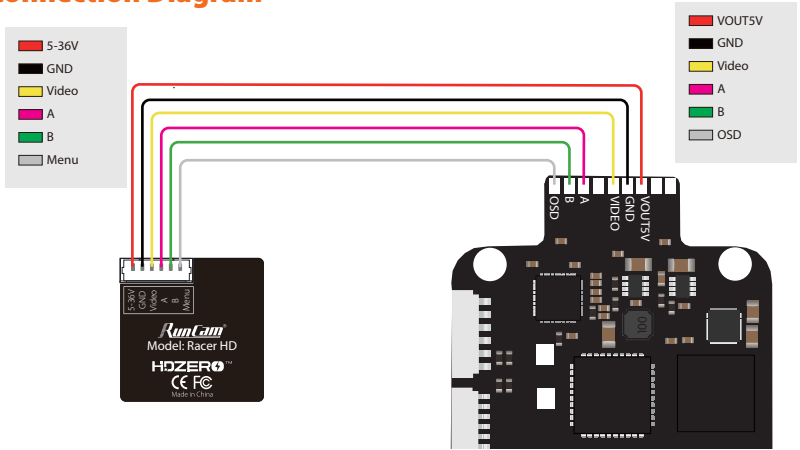
USER MANUAL

Mode Switch

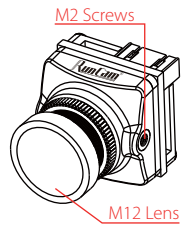
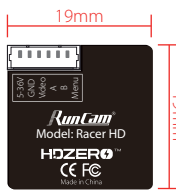
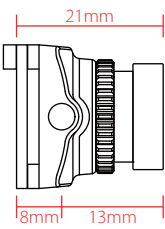
- The default mode is HQ-50FPS with power on. It can be switched to PAL by pressing the right button for 5 seconds. Then press the down button 5 seconds will bring it to mode LQ-NTSC;
- Under mode HQ-50FPS, press the down button 5 seconds, it will get to 60FPS. Press again the same button 5 seconds will bring it back to HQ-50FPS;
- Under mode LQ-NTSC, press the down button 5 seconds, it will get to PAL mode. Press again the same button 5 seconds will bring it back to LQ-NTSC.

Note: Switching modes between HQ-50FPS / 60FPS, LQ-NTSC / PAL requires rebooting the whole air unit for taking effect.

Connection Diagram



Dimensions & Installation



Camera Menu

• SETUP MENU

SETUP MENU	
CAMERA ID	NO ↵
PICT ADJUST	↵
WHITE BAL	PUSH
LANGUAGE	ENGLISH
CAMERA RESET	YES ↵
↵	
EXIT	

PICT ADJUST	
FLIP	OFF
BRIGHTNESS	128
CONTRAST	138
SHARPNESS	32
HUE	090
COLOR GAIN	138
RETURN	↵

- LANGUAGE (ENGLISH / DEUTSCH / FRANCAIS / PYCCKNN / PORTUGUES / ESPANOL / 中文)
- WHITE BAL (ATW / PUSH / USER1 / USER2 / MANUAL / PUSH LOCK)

- FLIP (OFF / H-FLIP / V-FLIP / HV-FLIP)
- BRIGHTNESS (128 / 0-255)
- CONTRAST (138 / 0-255)
- SHARPNESS (32 / 0-255)
- HUE (90 / 0-180)
- COLOR GAIN (138 / 0-255)

Parameters

Model	RunCam Racer HD	
Interface	6Pin Compatible HDZero VTX	
Image Sensor	Super WDR CMOS Sensor	
Resolution	HQ: 1280*720@50fps / 60fps	LQ: PAL / NTSC
Lens	FOV 150°	
Shutter	Rolling Shutter	
Power	DC 5-36V	
Current	200mA@5V	
Housing Material	ABS	
Net Weight	9g	
Dimensions	L19mm*W19mm*H21mm	