

When Turning on your PC

For 64 bit PC

Windows 7

Please press F8 key to enter into Advanced Boot Options menu to choose Disable Driver Signature Enforcement before Windows starts loading

Windows 8 or 10

Please follow the instruction of this video to Disable Driver Signature Enforcement

https://www.youtube.com/watch?v=71YAlw7_-kg

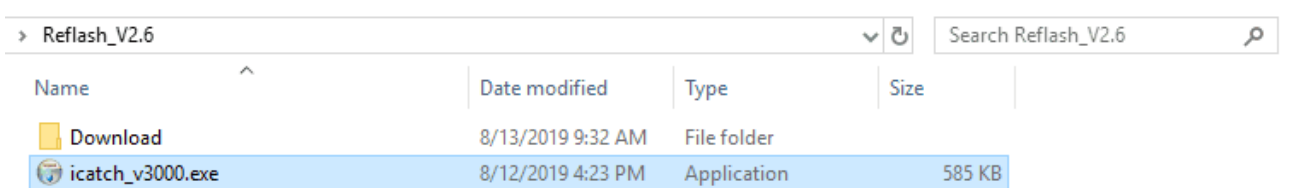
For 32 bit PC

Just turn it on normally

1. Download the Firmware Reflash File

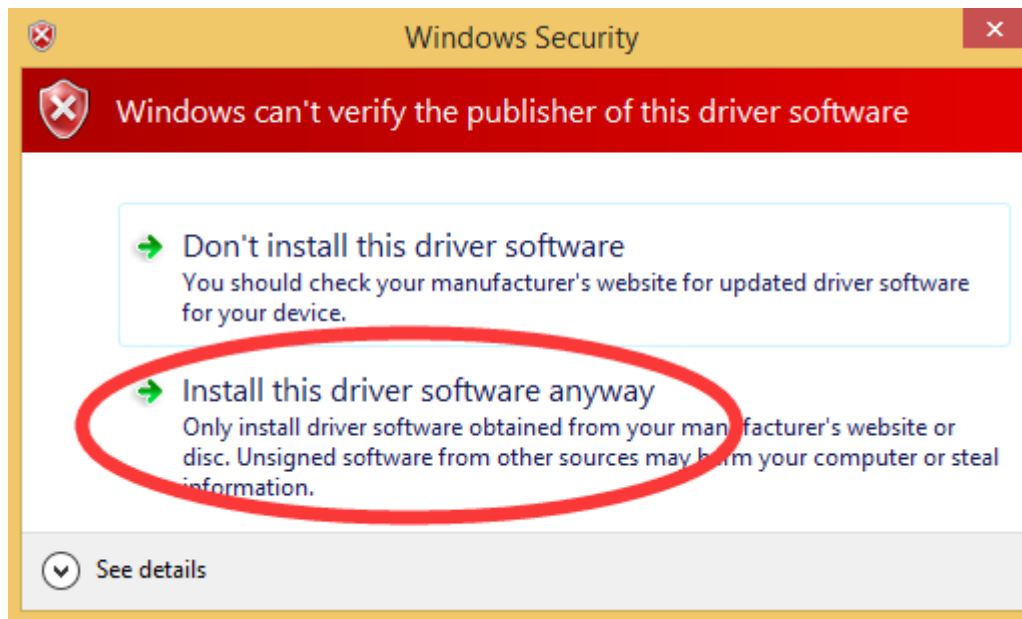
https://www.runcam.com/download/Reflash_V2.6.zip

and unzip it, you will get these

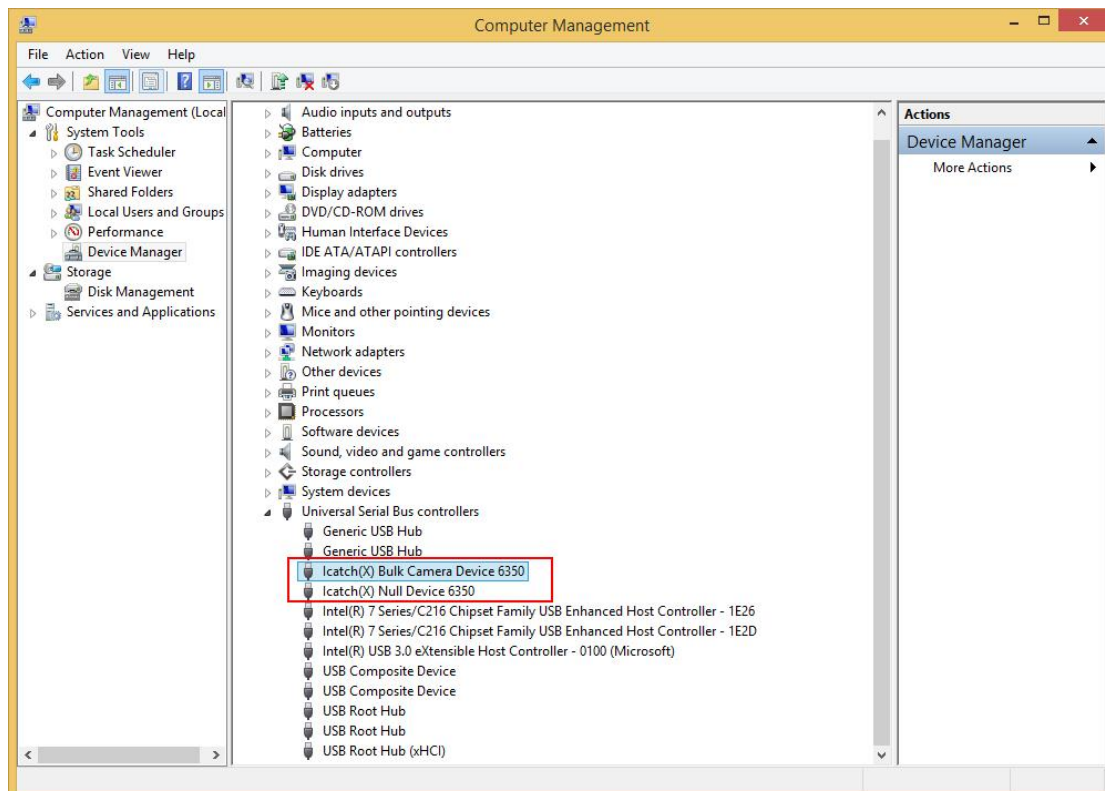


Name	Date modified	Type	Size
Download	8/13/2019 9:32 AM	File folder	
icatch_v3000.exe	8/12/2019 4:23 PM	Application	585 KB

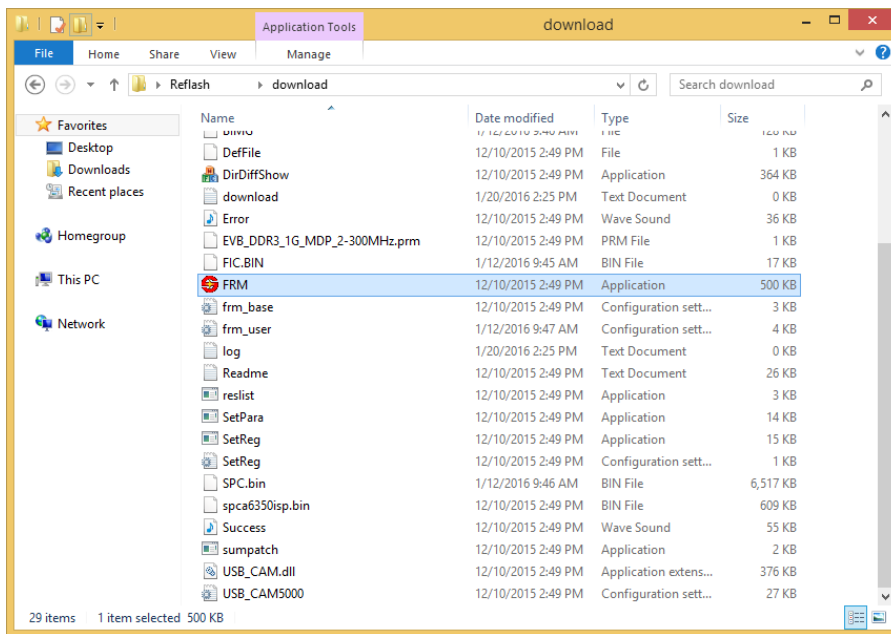
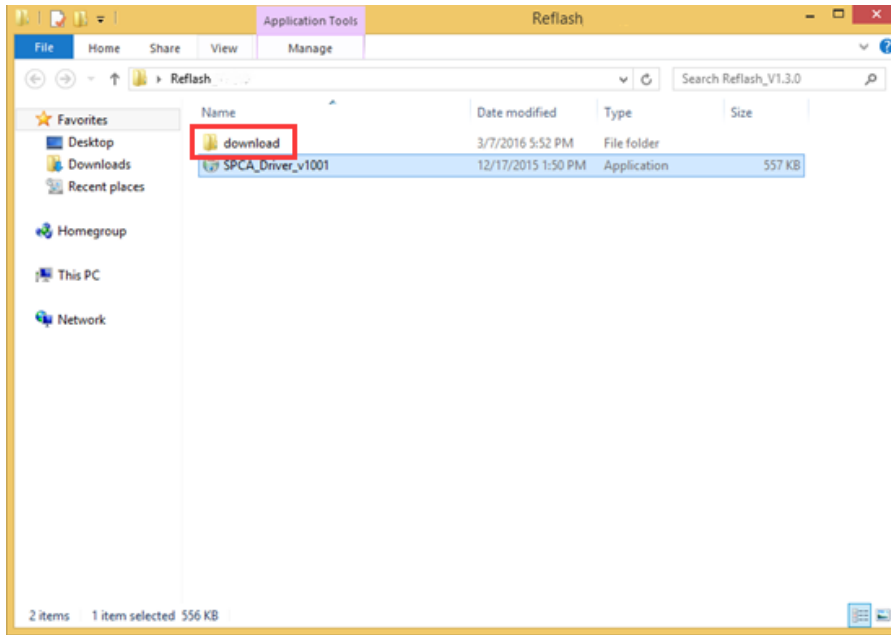
2. Install icatch_v3000.exe driver by choosing “install this driver software anyway”

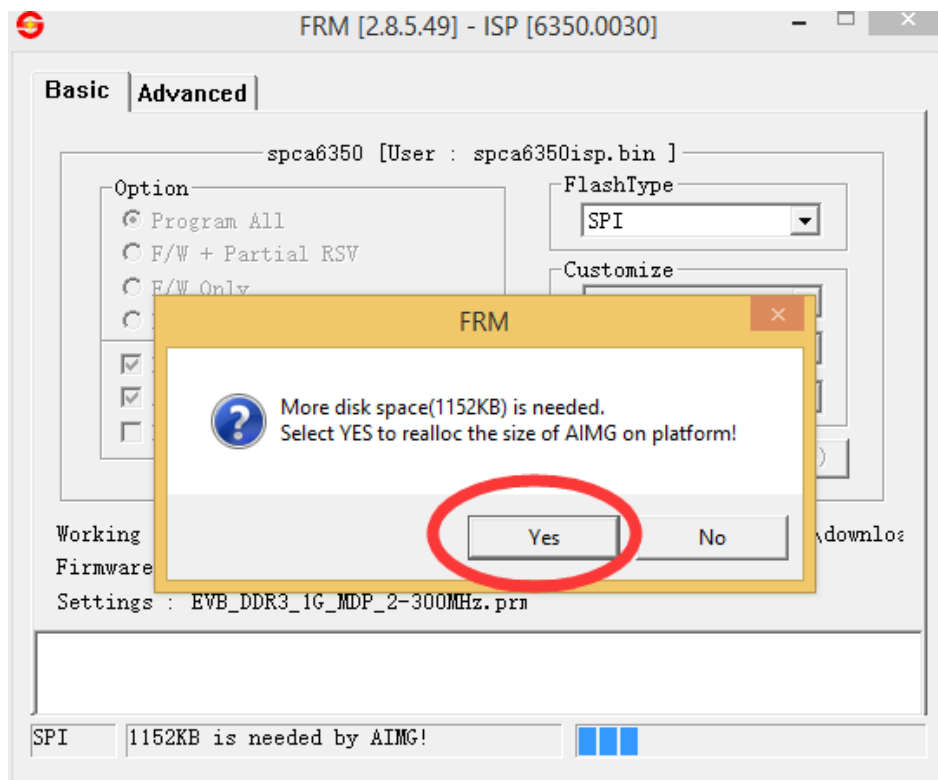
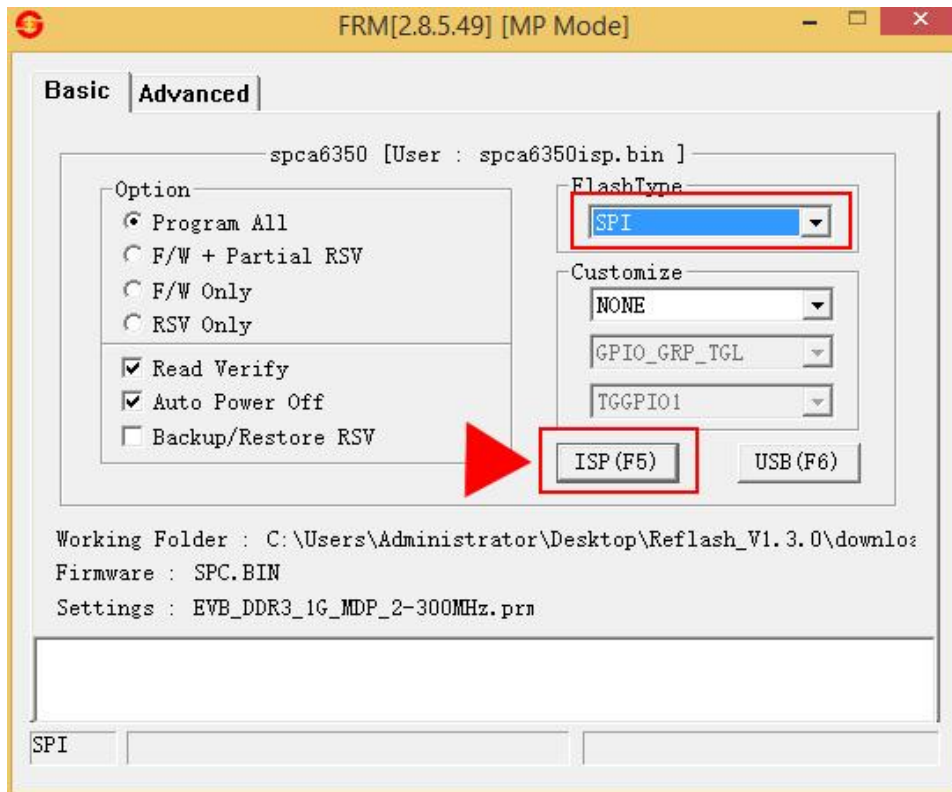


3. Remove the battery of RunCam 2, hold the WiFi button to connect the camera to your PC through a USB 2.0 port. (NOTE: USB 3.0 not supported). There will be two new devices recognized under Computer Management.

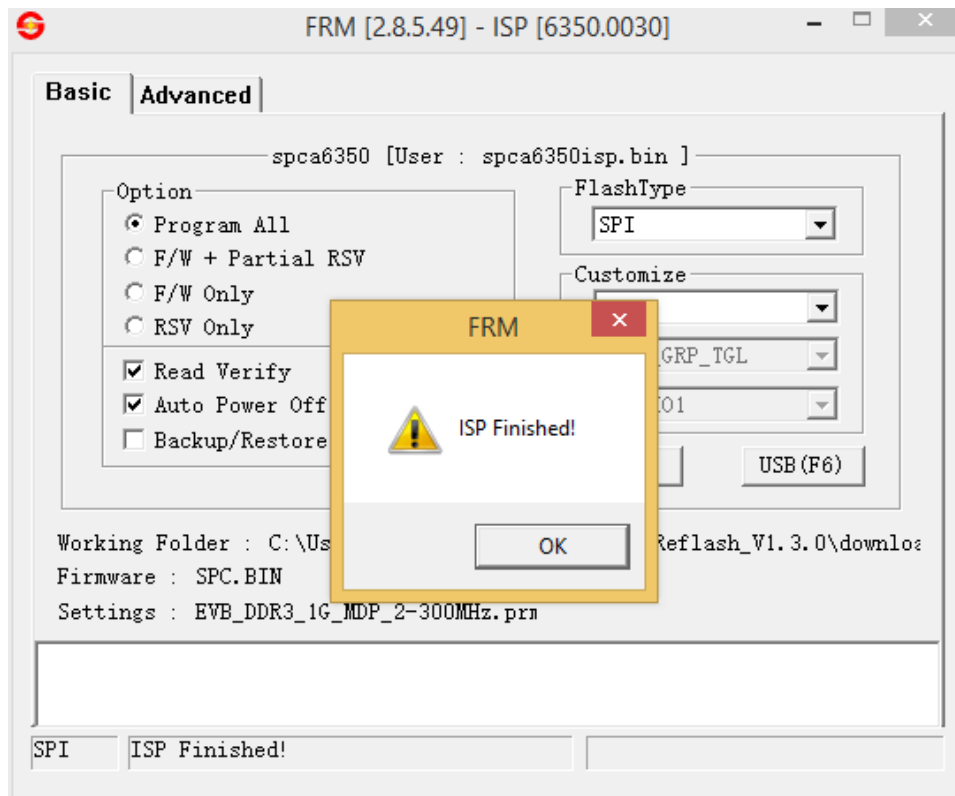


4. Enter into download file, follow up...





5. Done



Unplug the camera, replug the battery and turn it on. It works (again)!